



# IDS

# Integrated Circuits Delivery Forms

Preferable delivery form for our integrated circuits is tape & reel (T&R) in dry pack.

Our integrated circuits are offered in QFN or MLP packages (see product data sheet for details). The packages are RoHS compliant and Pb-free.

General Package Marking:

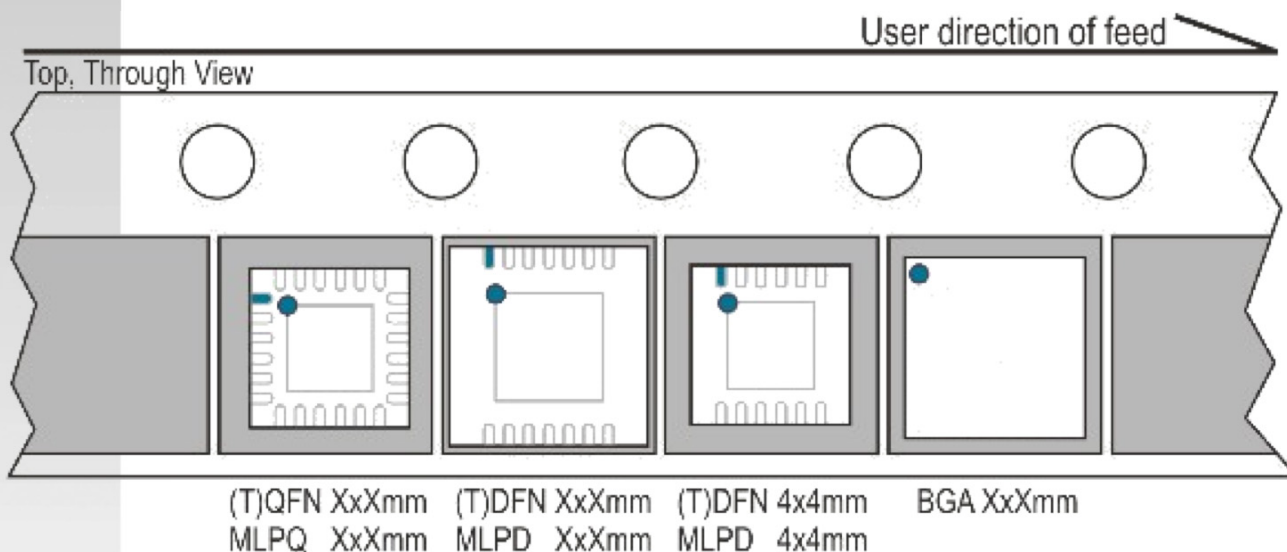
IDS  
Product Name (e.g. SL13A)  
Date Code (AYWWIXX)

A (Y) = RoHS compliant/Pb-free identifier (will not be used in future production as all part will be RoHS/Pb-free)  
Y = last digit of current year (in future production there will be two digits)  
WW = manufacturing week  
I = assembly plant identifier  
XX = assembly traceability code

Marking Example:



Pin 1 orientation is in accordance with EIA481.



Page two shows the reel dimensions.

Page three shows the dimensions on the tape.

### Headquarters

IDS Microchip AG  
Wächlenstrasse 5,  
CH-8832 Wollerau, Switzerland  
Phone: +41 43 844 6253  
Fax: +41 43 844 6250  
sales@ids-microchip.com

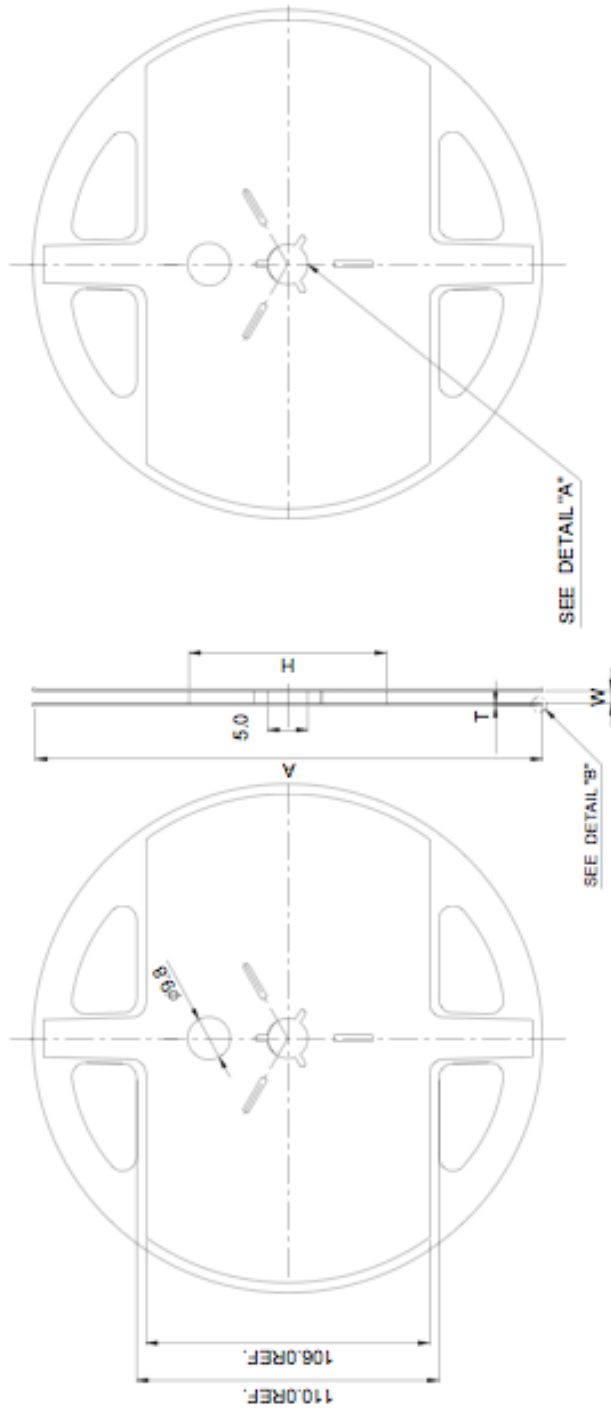
### Americas & Asia

IDS Microchip, Toronto Office  
34 Granlea Rd,  
Toronto, ON M2N 2Z5, Canada  
Phone: +416 227 9196  
Fax: +41 43 844 6250  
sales@ids-microchip.com

[www.ids-microchip.com](http://www.ids-microchip.com)

The information furnished here by IDS Microchip AG is believed to be correct and accurate as of the publication date. However, IDS shall not be liable to any third party for any damages, including but not limited to personal injury, property damage, loss of profits, loss of use, interruption of business or indirect, special, incidental, or consequential damages of any kind in connection with or arising out of the furnishing, performance, or use of the technical data. No obligation or liability to any third party shall arise or flow out of IDS' rendering technical or other services.

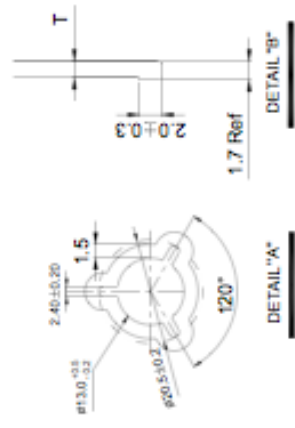
REVISIONS			
NO.	DESCRIPTION	DATE	BY
1.	Both side have the same appearance	11/29/06	Thomas
2.	Tolerance was +/-0.1.	01/11/07	Thomas
3.	add RD27632	04/11/07	Gina



PN	A ±1.0	H ±1.0	T ±0.3	W ±0.5
RD27616(-BK,-BL)	ø178.0	ø60.0	1.40	16.7
RS27616(-BK,-BL)	ø178.0	ø60.0	1.40	16.7
RD27624	ø178.0	ø60.0	1.50	25.0
RD27632	ø178.0	ø60.0	1.50	32.5

**-All Dimensions in Millimeters-**

TOLERANCES (EXCEPT AS NOTED)	RD276XX(-BL,-BK)		
DECIMAL	± 1.0		
DRAWN BY	Thomas	SCALE	1/3
APPROVED BY	Sam	DATE	11/06/06
MATERIAL	High Impact PS		
DRAWING NO.	B1106-06-1		
REV	3		



- Notes:
- RD stands for Reel Dipped.
  - BK stands for black Reel.
  - BL stands for blue Reel.
  - RS stands for Reel Standard.

未蓋有紅色“CONTROLLED DOCUMENT”印章之本圖面複製本，皆為“UNCONTROLLED DOCUMENT”文件。使用前，請先確定其有效性。未經許可，請勿隨意複製。

